

TECHNICAL RIDER - *Quijote*

Produced by Ombres Folles company

Duration: 60 minutes

Get-in and up: 7 hours (+ a pre-hanging)

Strike: 2 hours

Target audience: family performance (ages 8 and up) / school performance (ages 8 to 13)

Maximum audience:

230 (venue with incline or bleachers)

150 (venue with a raised stage, but no incline or bleachers)

100 (venue without incline or bleachers)

Ombres Folles Team:

- 2 puppeteers
- 1 stage manager (light and sound control)
- 1 technical director

Dressings rooms: 1 or 2 rooms, clean and well lightened, with mirrors, sinks, soap, towels, drinkable water and toilets. Some snacks without lactose are appreciated.

REQUIRED STAFF

- **2 to 4 technicians** for the get-in and up;
- **1 to 2 technicians** for the strike.

STAGE

We need:

- Minimum stage size: Depth 3,75m (12') / Length 6m (20') / Height 3m (10');
- Complete dark.

We bring:

- 6 road cases + 2 big sport bags + 1 suitcase.

LIGHTING

We need:

- 1 board and minimum 24 dimmers;
- 25 to 40 lights (minimum 12 *lekos*) + wires;

- 2 booms (minimum height: 6').

We bring:

- 4 lamps for the shadow theatre + wires;
- Transformer/dimmer for the “shadow lamps”;
- 1 small board for the “shadow lamps” with DMX wire;
- Gels.

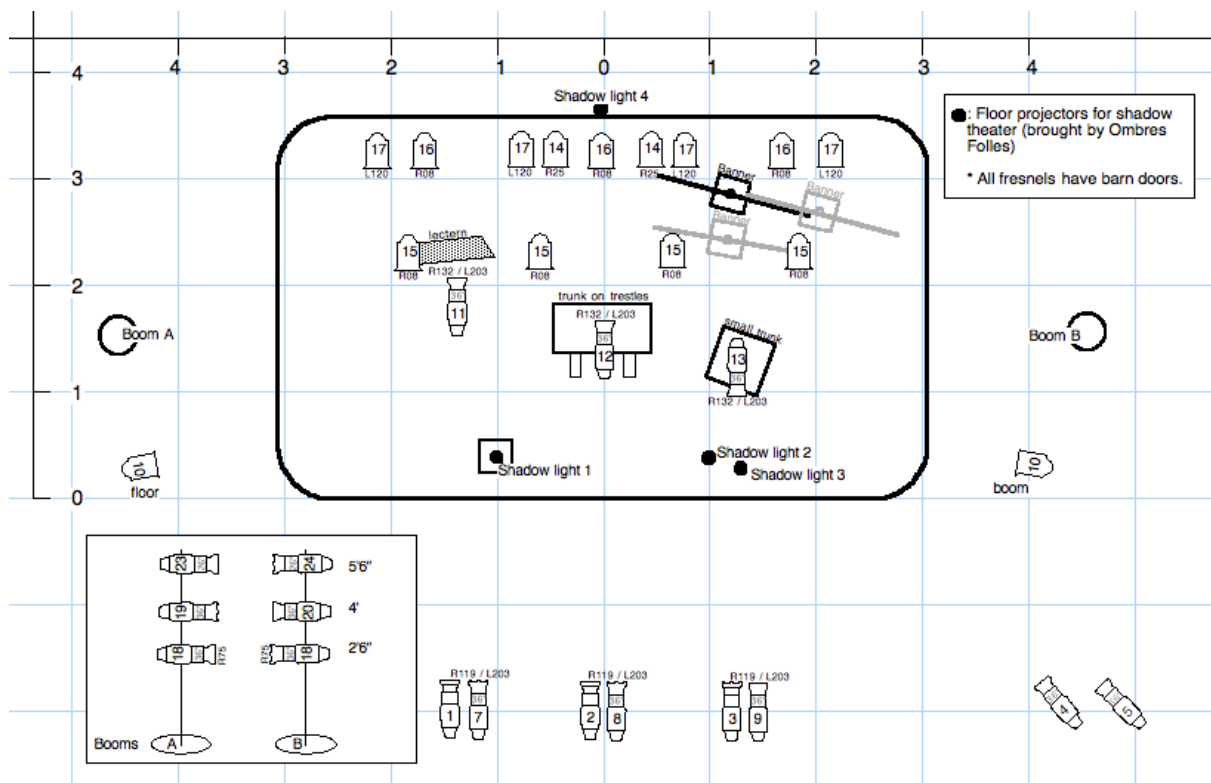
SOUND

We need:

- 1 small board (minimum 2 inputs left-right XLR) + 2 XLR wires;
- 2 to 4 stereo speakers.

We bring:

- 1 computer.



CONTACTS

- General requests: Maude Gareau, +1 (438) 882-6444, maude@ombresfolles.ca
- Light: Mélanie Whissell, whissell.melanie@gmail.com
- Sound: Olivier Monette-Milmore, olivier.m.milmore@gmail.com