

## TECHNICAL RIDER

### *Off the Beaten Path*

Produced by Ombres Folles Company

- **Maximum audience** : 125 (without stands) / 250 (with stands)
- **Target audience** : family audience (ages 5 and up) / school audience (ages 5 to 11)
- **Duration** : 50 minutes (no intermission)

OMBRES FOLLES TEAM:

- **Artists on stage** : 2 puppeteers – Jérémie Desbiens and Maude Gareau
- **Lighting desk and sound control** : 1 manager – Olivier Monette-Milmore

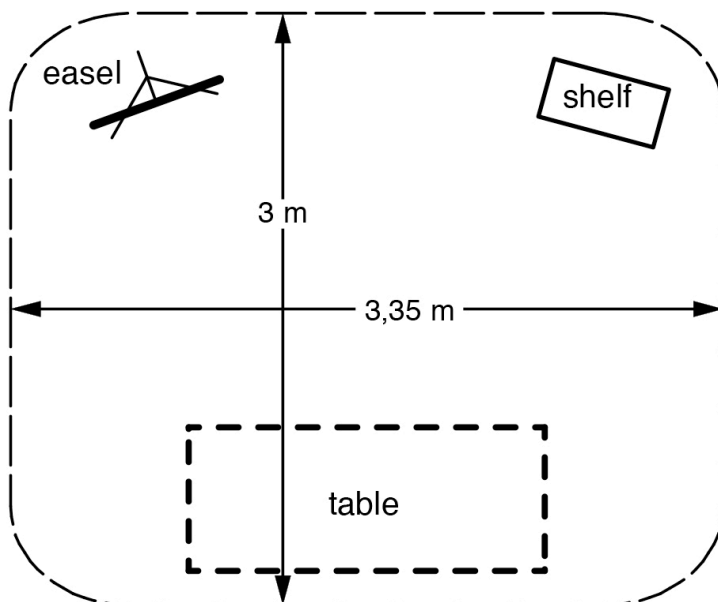
- **Get-in and up** : 4 hours

- **Get-out** : 1,5 hour

## TECHNICAL REQUIREMENTS

### STAGE


- **Minimum stage area**: depth 10', width 11', height 9';
- **Darkness is very important**, because we do some shadow theatre during the show;
- **Ombres Folles brings** : 3 roadcases (shelf, puppets, accessories, Some special lamps for shadow theatre, etc.) and 1 suitcase (computer, soundcard, tapes, batteries, etc.)
- **We need** :
  - one easel (wood or metal), approx. 150 cm height ;
  - one table (length 180 cm, depth 75 cm, height 75 cm).

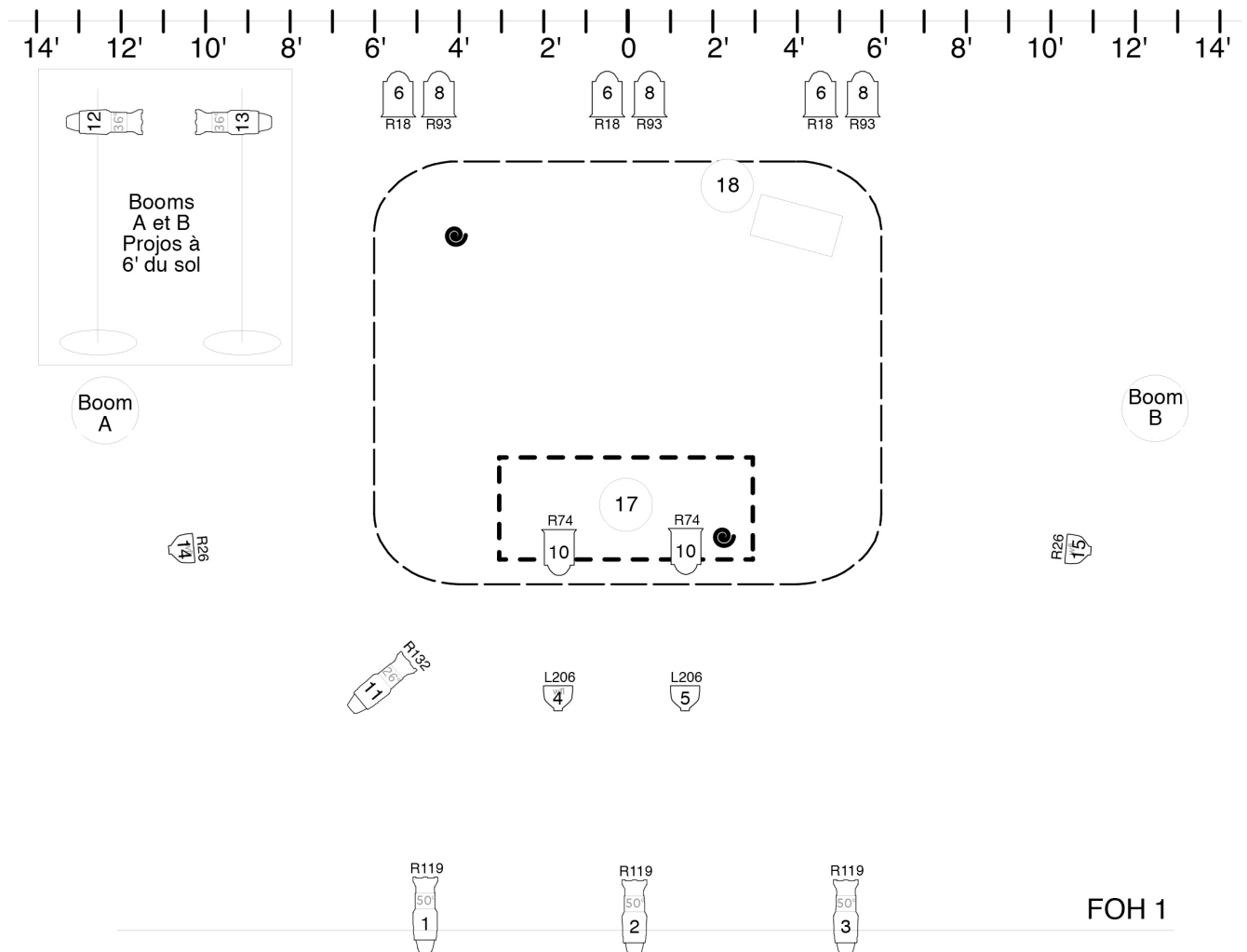


## SOUND

- 1 small console (with wires to plug a sound card/computer);
- 2 stereo PA.

## LIGHTING

- 1 lighting desk and approx. 20 circuits;
- 15 to 20 lights and required wiring;
- 1 or 2 direct electric circuits near the stage, for 2 little lamps that we bring (on the plot: ).



\* *If the venue doesn't have enough lights or circuits, it's possible to reduce the lighting plan a little bit.*

\* *It's also possible to do the show with a « self-supporting lighting system » : 2 tripods + 1 truss + 9 to 12 small lights + 1 dimmer pack (6 to 12 circuits) + 1 small lighting desk + required wiring.*

## CONTACTS

- General questions and lighting requirements: Maude Gareau | (438) 882-6444 | [maude@ombresfolles.ca](mailto:maude@ombresfolles.ca)
- Sound: Olivier Monette-Milmore | 1 (514) 507-5503 | [olivier.m.milmore@gmail.com](mailto:olivier.m.milmore@gmail.com)