

# TECHNICAL RIDER - *Quichotte*

Produced by Ombres Folles company

- **Maximum audience:** 230 (venue with incline or stands) + 120 (venue without incline or stands)
- **Target audience:** familial show (ages 8 and up) / scholar show (ages 8 to 13)
- **Duration:** 60 minutes

## OMBRES FOLLES TEAM:

- 2 puppeteers and stage directors – Benjamin Déziel and Maude Gareau
- 1 stage manager (light and sound control) and soundman – Olivier Monette-Milmore
- 1 technical director and lighting designer – Mélanie Whissell

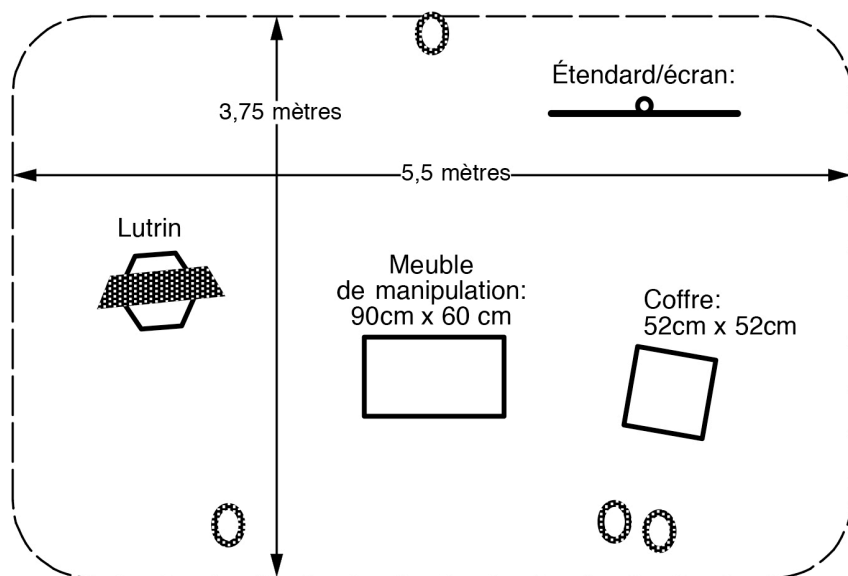
• **Get-in and up:** 6 hours (+ a pre-hanging)

• **Get-out:** 1,5 hour

• **Dressings rooms:** 1 or 2 rooms, clean and well lightened, with mirrors, sinks, soap, drinkable water and toilets. Some snacks without lactose are appreciated.

## TECHNICAL NEEDS

### STAGE



○ : Projecteurs au sol pour théâtre d'ombre  
(apportés par Ombres Folles)

- **Minimum stage size:** Depth 3,75m (12') / Length 5,5m (18') / Height 2,75m (9' 6")
- **Complete dark is needed**
- **We bring:** 4 road cases + 2 big sport bags + 2 suitcases.

## SOUND

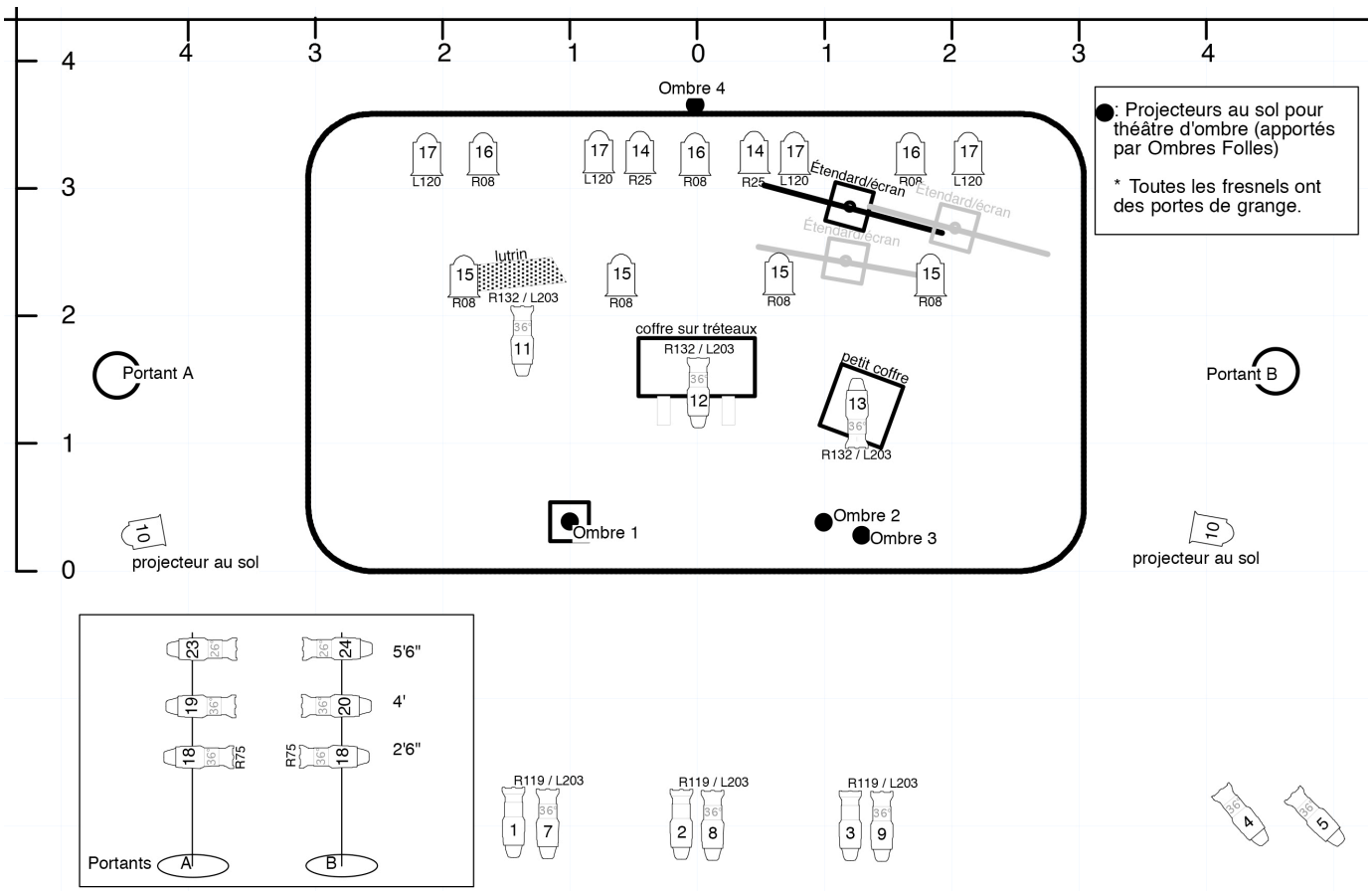
### We need:

- 1 small board (minimum 2 inputs left-right XLR) + 2 XLR wires ;
- 2 to 4 stereo speakers.

### We bring:

- 1 computer + soundcard.

## LIGHTING



### We need:

- 1 board and minimum 24 dimmers/circuits;
- 25 to 40 lights (minimum 12 lekos) + wires;
- 2 booms (height 2m).

### We bring:

- 4 lamps for the shadow theatre + wires;
- Transfo/dimmer for the “shadow lamps”;
- 1 small board for the “shadow lamps” with DMX wire;
- Gels.

## REQUIRED STAFF

- **2 to 4 technicians** for the get-in and up;
- **1 to 2 technicians** for the strike.

## TYPICAL SCHEDULE *(as an example only)*

*Before we arrive: pre-hanging of the lights*

8:00 AM to 9:15 AM: set-up on stage

9:15 AM to 10:30 AM: focus of the lights

10:30 AM to 11:15 AM: set-up of the “shadow lamps” system + sound set-up

11:15 AM to 12:00 PM: sound levels

*12:00 PM to 1:00 PM: lunch*

1:00 PM to 2:00 PM: lighting levels

2:00 PM to 3:00 PM: standby

3:00 PM to 4:00 PM: show

## CONTACTS

- **General requests: Maude Gareau** | +1 (438) 882-6444 | [maude@ombresfolles.ca](mailto:maude@ombresfolles.ca)
- **Lighting: Mélanie Whissell** | +1 (514) 566-0566 | [whissell.melanie@gmail.com](mailto:whissell.melanie@gmail.com)
- **Sound: Olivier Monette-Milmore** | +1 (514) 507-5503 | [olivier.m.milmore@gmail.com](mailto:olivier.m.milmore@gmail.com)